



FRIENDS OF MOUNT PAINTER NEWS

JULY 2018

For more information about anything in this newsletter:
contact Sarah Hnatiuk

on 0424 263 565 or at friends.of.mount.painter@gmail.com

JULY WORK PARTY

Date: Sunday, 15 July

When: 9.30am – 12.30pm

Location: “The Crater Patch” (just south-east of the summit)

To reach the location: Enter the reserve between 20 and 22 Booth Crescent, Cook, follow the gravel road uphill to the right, pass the water tanks, and continue up to the summit and beyond towards the end of the summit path. The Sheoaks are down to your left.

Tasks: Restoring tree guards and removing ones where trees have died

Wear: Sturdy footwear and clothes to protect you from the cold and wind

Bring: Please bring some drinking water, a mug and some food to share for morning tea.
Other drinks will be provided.

All tools provided. No experience needed.

Our monthly work parties are on the third Sunday of each month.

OTHER UPCOMING EVENTS

- Sunday, 19 August: grassland restoration in the Wildflower Triangle: planting grasses and lilies
- Sunday, 2 September: joint work party with Friends of Aranda Bushland on Aranda Bushland.



Mount Painter from the east

WHAT'S BEEN HAPPENING ON MOUNT PAINTER

Telstra volunteers helped remove fencing.

Working alongside Friends of Mount Painter volunteers and a couple of rangers, they took out part of the fence enclosing trees planted more than 20 years ago a little uphill from the noticeboard. You can now walk directly uphill from the Booth Crescent entry to the summit through the gaps we made!

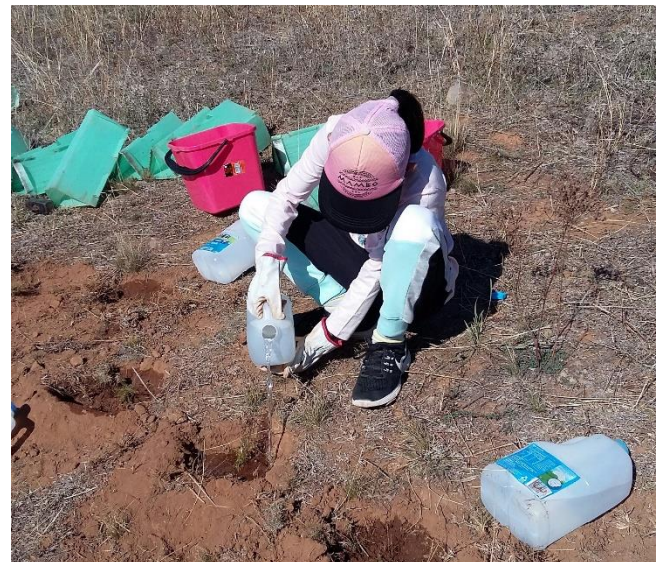


We also removed parts of a fallen, much older fence from the ridge running west from the water tanks. The old wooden fence posts remain as a reminder of a former time.

Ranger Phil, with his large trailer, carted all the wire away. We appreciated his help, as well as all the other assistance he has given us over the last two years. We are sorry he has moved on to another position.

We planted daisies and vines on the north east slopes.

Eleven people came to our May work party. We added another species of daisy to the area on the north-east slope where we planted Yellow Burr-daisies last year. This year we planted clumps of Narrow-leaved New Holland Daisies, as well as some Native Raspberries and Hardenbergia.



And we had another great bird walk with Nicki Taws.



We are removing ivy from on and around the trees near the water tanks

We have chipped away at the large patch of ivy near the water tanks from time to time, and a couple of years ago one of the rangers sprayed it twice. None of this has had much effect in reducing the size and vigour of the patch. This time, led by Cec Sutton, we are trying again. The plan is to dig out as much as we can and follow up by spraying the young leaves that sprout in spring. We hope these leaves will be more susceptible to the herbicide than the older leaves that were sprayed in the earlier attempts. There is now a large and growing mound of weeded ivy awaiting removal from beside the track. Thanks to Ranger Michelle for what she has already taken away.



The magpies, that hoped to share our morning tea, also explored the earth we had turned over.



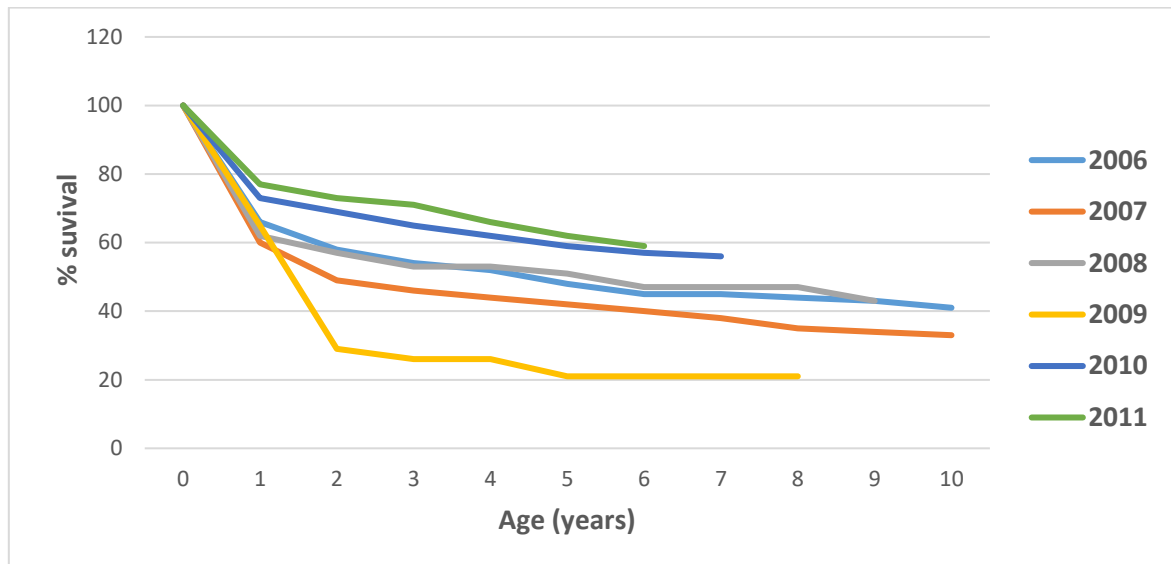
We have counted the Drooping Sheoaks. Seventy-five per cent of them are still alive and flourishing. They are now two years old.

WOODLAND FORUM

A Woodland Forum, run by the ACT Government on 26 and 27 June, brought together people with a range of expertise in native woodlands and the factors that affect them. The proceedings will help with the development of a new Woodland Strategy to replace the 2004 version. The draft strategy is expected to be released for public comment next February.

Sarah Hnatiuk, who attended the Forum, gave a speed talk about the results of planting shrub and tree tubestock on Mount Painter. This is the story she told.

- **Less than a quarter (23%) of the tubestock planted in 2005 survived over the following summer.** By contrast, 82% of the tubestock planted by Greening Australia volunteers that same year on Mt Macdonald near the Cotter Dam survived to 2006. These very different survival rates stimulated us to change how we planted and cared for the tubestock.
- **The result during the drought years, 2006-09, was two to three times better survival** to one year of age (56-66%) with the improvements we introduced.
- In 2010, the drought broke, the rabbit population was reduced by 94%, and kangaroos were culled for the first time. **With good rain and less pressure from herbivores, around 80% survived** from the 2010 and 2011 plantings.
- Mortality continues over the years after planting for each planting, but at a lesser rate than over the first year of life. The extent of these losses gives some idea of the number of tubestock we need to plant for the number we want in the long run



- There are now many more trees and shrubs on Mount Painter now (right) than 16 years ago (left).

